

PRODUCT CATALOGUE '19

beyma ,,

**BAJA Y MEDIA
FRECUENCIA**

**LOW & MID
FREQUENCY**



● maltcross

● maltcross

● maltcross

● maltcross

NEW

MODEL	21LEX1600Nd	18LEX1600Nd	18PW1400Fe	18P1200Nd/N	18LEX1000Nd	18P1000FeV2	18PWB1000 Fe
DIAMETER (inches)	21	18	18	18	18	18	18
POWER (WAES)	1600	1600	1400	1200	1000	1200	1000
SENSITIVITY (dB 2.83v)	98	96	98	98	98	98	96
COIL DIAMETER	4	4	4	4	3,5	4	4
Fs (Hz)	30	33	32	37	34	33	27
Vas (liter)	305	231	228,9	198	260	230	317
Qts	0,29	0,43	0,27	0,34	0,39	0,32	0,38
Xmax (mm)	14	14,5	10	9,5	10	8	12,5
FREQUENCY RANGE (Hz)	30-1000	35-1000	25-1800	40-2000	35-1000	30-2000	30-2000
MAGNET	Nd	Nd	Ferr	Nd	Nd	Ferr	Ferr
WEIGHT (Kg)	11,8	9,5	16,9	8,5	7,3	13,8	13,6



● maltcross

● maltcross

● maltcross

NEW

MODEL	18G550	18LX60V2	18WRS600	15LEX1600Nd	15LEX1000Nd	15P1000FeV2	15P80Nd
DIAMETER (inches)	18	18	18	15	15	15	15
POWER (WAES)	900	700	600	1600	1000	1000	800
SENSITIVITY (dB 2.83v)	97	98	97	96	97	98	101
COIL DIAMETER	4,5	4	3	4	3,5	4	4
Fs (Hz)	33	35	30	41	41	45	39
Vas (liter)	290	236	354	91	113	80,7	184
Qts	0,40	0,48	0,47	0,36	0,37	0,30	0,21
Xmax (mm)	10	8	8,5	14,5	10	8	7,5
FREQUENCY RANGE (Hz)	35-1500	25-1000	35-1000	40-1500	40-1500	45-2000	40-4000
MAGNET	Ferr	Ferr	Ferr	Nd	Nd	Ferr	Nd
WEIGHT (Kg)	12,6	11,7	8,7	8,8	6,7	13,1	6



● maltcross

● maltcross

● maltcross

● maltcross

MODEL	15P80Fe/N	15LX60V2	15MC700Nd	15MC700	15MC500	15MCS500	15MI100
DIAMETER (inches)	15	15	15	15	15	15	15
POWER (WAES)	800	700	700	700	500	500	450
SENSITIVITY (dB 2.83v)	101	98	100	98	98	98	100
COIL DIAMETER	4	4	3	3	2,5	2,5	3
Fs (Hz)	32	42	49	44	46	46	37
Vas (liter)	305	105	122	148	134	134	264
Qts	0,18	0,44	0,31	0,37	0,45	0,48	0,29
Xmax (mm)	7,5	9	7	9,8	8	8	4,5
FREQUENCY RANGE (Hz)	30-4000	30-1500	50-4000	45-4000	50-4000	50-4000	40-5000
MAGNET	Ferr	Ferr	Nd	Ferr	Ferr	Ferr	Ferr
WEIGHT (Kg)	12,5	10,2	4,2	7,5	6,2	6,2	7,8



● maltcross

NEW

● maltcross

NEW

MODEL	15WR400	15WRS400	SM115/N	15CMV2	14MC700Nd	12LEX1300Nd
DIAMETER (inches)	15	15	15	15	14	12
POWER (WAES)	400	400	400	350	700	1300
SENSITIVITY (dB 2.83v)	99	98,5	98	97	99	96
COIL DIAMETER	3	3	3	3	3	4
Fs (Hz)	36	36	35	49	51	45
Vas (liter)	236	236	267	104	78	43
Qts	0,3	0,33	0,38	0,49	0,28	0,24
Xmax (mm)	6,3	6,3	7,25	7	7	11
FREQUENCY RANGE (Hz)	40-4000	40-4000	35-3000	50-4000	55-4000	45-1500
MAGNET	Ferr	Ferr	Ferr	Ferr	Nd	Nd
WEIGHT (Kg)	6,1	6,25	6,5	6	4	8,3



● maltcross

MODEL	12P1000Nd	12P80NDV2	12P80FeV2	12LX60V2	12MC700Nd	12G40
DIAMETER (inches)	12	12	12	12	12	12
POWER (WAES)	900	700	700	700	700	500
SENSITIVITY (dB 2.83v)	96	100	99	96	99	97
COIL DIAMETER	4	4	4	4	3	3
Fs (Hz)	47	47	48	49	51	44
Vas (liter)	49	65	61	43	58	81
Qts	0,26	0,19	0,21	0,38	0,24	0,3
Xmax (mm)	8	7,5	7,5	9	7	7
FREQUENCY RANGE (Hz)	50-2000	50-4000	50-4000	35-2000	60-4000	45-4000
MAGNET	Nd	Nd	Ferr	Ferr	Nd	Ferr
WEIGHT (Kg)	5,4	5,6	11,5	9,7	3,7	7,1

**BAJA Y MEDIA
FRECUENCIA**

**LOW & MID
FREQUENCY**



◆ maltcross

MODEL	12MC500	12MCS500	12M1100	12WR400	12WRS400	SM112/N
DIAMETER (inches)	12	12	12	12	12	12
POWER (WAES)	500	500	450	400	400	400
SENSITIVITY (dB 2.83v)	98	98	100	97	97	97
COIL DIAMETER	2,5	2,5	3	3	3	3
Fs (Hz)	57	57	58	42	42	40
Vas (liter)	57	57	64	91	91	117,3
Qts	0,34	0,36	0,22	0,27	0,29	0,3
Xmax (mm)	8	8	3	6,3	6,3	7,25
FREQUENCY RANGE (Hz)	65 - 5000	65-5000	60 - 4000	45-5000	45-5000	40-4000
MAGNET	Ferr	Ferr	Ferr	Ferr	Ferr	Ferr
WEIGHT (Kg)	5,8	6	7,2	5,5	5,5	5,65



◆ maltcross

◆ maltcross

◆ maltcross

MODEL	SM212	12CMV2	12BR70	10MC700Nd	10MC500	10MCS500
DIAMETER (inches)	12	12	12	10	10	10
POWER (WAES)	350	320	125 RMS	700	500	500
SENSITIVITY (dB 2.83v)	97	96	93	97	97	96,5
COIL DIAMETER	2,5	2,5	2	3	2,5	2,5
Fs (Hz)	43	49	31	63	65	65
Vas (liter)	103	76	142	20	24	24
Qts	0,38	0,47	0,5	0,22	0,29	0,31
Xmax (mm)	8,25	7	8	7	8	8
FREQUENCY RANGE (Hz)	45-4000	50-6000	25-4000	65-4000	70-5000	70-5000
MAGNET	Ferr	Ferr	Ferr	Nd	Ferr	Ferr
WEIGHT (Kg)	4,6	4,6	3,6	3,6	5,7	5,7



MODEL	10MCF400Nd	10G40	10M1100	10WR300	10WRS300	SM110/N
DIAMETER (inches)	10	10	10	10	10	10
POWER (WAES)	400	400	350	300	300	200
SENSITIVITY (dB 2.83v)	102	95	98	95	95	95
COIL DIAMETER	4	3	3	2	2	2
Fs (Hz)	260	45	50	52	52	43
Vas (liter)	2	49	54	42	42	65
Qts	0,44	0,3	0,21	0,35	0,38	0,35
Xmax (mm)	3,5	7	4,5	6	6	6
FREQUENCY RANGE (Hz)	300-5000	45-4000	70-4000	55-5000	55-5000	45-6000
MAGNET	Nd	Ferr	Ferr	Ferr	Ferr	Ferr
WEIGHT (Kg)	6,2	5,7	7,1	3,5	3,5	3,5



◆ maltcross

◆ maltcross

MODEL	10BR80V2	10CMV2	8MC500Nd	8P300Fe/N	8MC300Nd	8M1100
DIAMETER (inches)	10	10	8	8	8	8
POWER (WAES)	100 RMS	250	500	300	300	250
SENSITIVITY (dB 2.83v)	90,6	95	98	94	96	96
COIL DIAMETER	2	1,5	2,5	2,5	2	2
Fs (Hz)	31	52	69	53	76	90
Vas (liter)	108	44	15,9	24,8	11,6	12
Qts	0,47	0,42	0,18	0,31	0,28	0,45
Xmax (mm)	6,5	6,5	5	6	6	3
FREQUENCY RANGE (Hz)	30-5000	60-5000	80-6000	60-7000	80-4000	100-7000
MAGNET	Ferr	Ferr	Nd	Ferr	Nd	Ferr
WEIGHT (Kg)	2,9	3,1	2,8	4	1,9	3,1



MODEL	8G40	8WR300	8WRS300	SM108	8BR40/N	8CMV2
DIAMETER (inches)	8	8	8	8	8	8
POWER (WAES)	250	300	300	150	50 RMS	250
SENSITIVITY (dB 2.83v)	95	95	95	95	91	94
COIL DIAMETER	2,5	2	2	2	1	1,5
Fs (Hz)	70	65	65	71	30	75
Vas (liter)	17	15	15	14,4	89,1	14,6
Qts	0,36	0,27	0,28	0,32	0,39	0,52
Xmax (mm)	6,5	6	6	6	6,7	5,7
FREQUENCY RANGE (Hz)	70-6000	65-4000	65-4000	70-6000	30-6000	80-8000
MAGNET	Ferr	Ferr	Ferr	Ferr	Ferr	Ferr
WEIGHT (Kg)	3,3	3,3	3,25	3,1	1,35	2,4

**BAJA Y MEDIA
FRECUENCIA**

**LOW & MID
FREQUENCY**



MODEL	BF8R	6M1100	6P200Fe	6P200Nd	6MCF200Nd
DIAMETER (inches)	8	6,5	6,5	6,5	6,5
POWER (WAES)	50 RMS	250	200	200	200
SENSITIVITY (dB 2.83v)	90	94	93	92	97
COIL DIAMETER	1	2	2	2	2
Fs (Hz)	52	128	58	56	406
Vas (liter)	29,6	3,07	11,1	11,9	0,27
Qts	0,9	0,51	0,26	0,29	0,72
Xmax (mm)	5,7	3	5,5	5,5	2,5
FREQUENCY RANGE (Hz)	30-6000	100-8000	60-9000	60-9000	400-12000
MAGNET	Ferr	Ferr	Ferr	Nd	Nd
WEIGHT (Kg)	1,2	2,2	3,1	1,9	2,3



MODEL	6G40Nd	6G40Fe	6CMV2	6B30P	5P200Fe
DIAMETER (inches)	6,5	6,5	6,5	6,5	5
POWER (WAES)	170	170	220	50 RMS	150
SENSITIVITY (dB 2.83v)	94	94,3	94	90	92
COIL DIAMETER	2	2	1,5	1	1,5
Fs (Hz)	85	102	90	56	72
Vas (liter)	7	5	6,5	15,6	5,6
Qts	0,33	0,4	0,34	0,5	0,33
Xmax (mm)	3	3,1	5,7	5,5	5,7
FREQUENCY RANGE (Hz)	90-8000	110-9000	95-8000	55-8000	70-10000
MAGNET	Nd	Ferr	Ferr	Ferr	Ferr
WEIGHT (Kg)	1,6	3	2,2	1,25	2,2



MODEL	5P200Nd	5G40Nd/N	5MP60/N	SK07
DIAMETER (inches)	5	5	5	-
POWER (WAES)	150	100	50 RMS	50
SENSITIVITY (dB 2.83v)	92	92	88	-
COIL DIAMETER	1,5	1,5	1	3
Fs (Hz)	78	140	63	47
Vas (liter)	4,5	1,45	5,8	-
Qts	0,3	0,45	0,46	-
Xmax (mm)	5,7	3	5,5	-
FREQUENCY RANGE (Hz)	80-10000	150-17000	65-12000	20-100
MAGNET	Nd	Nd	Ferr	Nd
WEIGHT (Kg)	1,2	1,3	1,2	1,5

COAXIALES

COAXIALS



MODEL	15CX400Nd	15CX400Fe	15XA38Nd	12CX400Nd	12CX400Fe
DIAMETER (inches)	15	15	15	12	12
POWER (WAES)	400/90	400/80	350/90	400/90	400/80
SENSITIVITY (dB 2.83v)	98/105	98/105	99/105	98/105	96/105
COIL DIAMETER	4/2,84	4/2,87	4/2,85	4/2,85	4/2,87
Fs (Hz)	40	40	38	45	42
FREQUENCY RANGE (Hz)	40-20000	35-20000	40-20000	50-20000	40-20000
MAGNET	Nd	Ferr	Nd	Nd	Ferr
WEIGHT (Kg)	7,22	11,91	6,8	6,5	11,3



pm4

pm4

MODEL	12XA30Nd	10CX300Fe	8CX300Nd/N	8CX300Fe
DIAMETER (inches)	12	10	8	8
POWER (WAES)	350/90	300/50	250/50	300/50
SENSITIVITY (dB 2.83v)	98/105	96,5/104	96/104	95/105
COIL DIAMETER	4/2,85	2,5/1,75	2,5/1,75	2,5/1,75
Fs (Hz)	35	48	61	89
FREQUENCY RANGE (Hz)	40-20000	50-20000	60-20000	90-20000
MAGNET	Nd	Ferr	Nd	Ferr
WEIGHT (Kg)	6,3	5,1	2,8	4,6

COAXIALES

COAXIALS



pm4

MODEL	6CX200Nd/N	6CX200Fe	5CX200Nd/N	5CX200Fe
DIAMETER (inches)	6,5	6,5	5	5
POWER (WAES)	200/40	200/25	150/40	150/25
SENSITIVITY (dB 2.83v)	92/103	94/102	92,5/102	92/105
COIL DIAMETER	2/1,75	2/1	1,5/1,75	1,5/1
Fs (Hz)	65	65	75	82
FREQUENCY RANGE (Hz)	65-20000	60-20000	75-20000	85-20000
MAGNET	Nd	Ferr	Nd	Ferr
WEIGHT (Kg)	1,9	3,6	1,6	2,5

MOTORES DE COMPRESIÓN

COMPRESSION DRIVERS



MODEL	CP850Nd	CP800/Ti	CP750/Ti	SMC60	CP855Nd	CP755Nd
THROAT DIAMETER (inches)	2	2	2	2	1,4	1,4
POWER (WAES)	100	100	70	80	100	60
SENSITIVITY (dB 2.83v)	112	112	110	109	112	110
COIL DIAMETER (inches)	4	4	2,8	2,8	4	2,8
DOVE MATERIAL	Titanium	Titanium	Titanium/polyester	Titanium/polyester	Titanium	Titanium/polyester
XOVER (12dB/oct)	>500Hz	>500Hz	>800Hz	>800Hz	>500Hz	>800Hz
FREQUENCY RANGE (Hz)	500-20000	500-20000	600-20000	500-18000	500-20000	600-20000
MAGNET	Nd	Ferr	Ferr	Ferr	Nd	Nd
WEIGHT (Kg)	4,4	10,3	7,05	4,5	4,3	2,96



pm4

pm4

pm4

NEW

MODEL	CP755Nd/Al	CP755/Ti	SMC65	SMC65Nd	CD14Nd	CD14Fe	CD1114Fe
THROAT DIAMETER (inches)	1,4	1,4	1,4	1,4	1,4	1,4	1,4
POWER (WAES)	60	70	50	50	60	60	70
SENSITIVITY (dB 2.83v)	112	110	107	108	108	107	109
COIL DIAMETER (inches)	2,9	2,9	2,9	2,8	2,5	2,5	1,75
DOVE MATERIAL	Aluminium	Titanium/polyester	Titanium/polyester	Titanium/polyester	PM4	PM4	PM4
XOVER (12dB/oct)	>800Hz	>800Hz	>800Hz	>800Hz	>800Hz	>800Hz	>1,5 kHz
FREQUENCY RANGE (Hz)	600-20000	600-20000	700-18000	600-20000	600-17000	500-16000	700-19000
MAGNET	Nd	Ferr	Ferr	Nd	Nd	Ferr	Ferr
WEIGHT (Kg)	2,96	6,75	4,2	2,2	1,9	3,3	1,9



pm4

MODEL	CD1014Fe/N	CP380/M	CP385Nd	SMC225Nd	SMC280/N	SMC8060/N
THROAT DIAMETER (inches)	1,4	1	1	1	1	1
POWER (WAES)	70	70	70	40	50	50
SENSITIVITY (dB 2.83v)	110	107	109	108	105	107
COIL DIAMETER (inches)	1,75	1,75	1,75	1,75	1,75	1,75
DOVE MATERIAL	PM4	Polyester	Polyester	Polyester	Polyester	Polyester
XOVER (12dB/oct)	>1,2kHz	>1,2kHz	>1,5kHz	>1,2kHz	>1,5kHz	>1,5kHz
FREQUENCY RANGE (Hz)	700-19000	800-20000	800-20000	800-20000	800-18000	800-18000
MAGNET	Ferr	Ferr	Nd	Nd	Ferr	Ferr
WEIGHT (Kg)	2	3,25	1,35	0,7	1,3	1,5



pm4

pm4

pm4

pm4

pm4

pm4

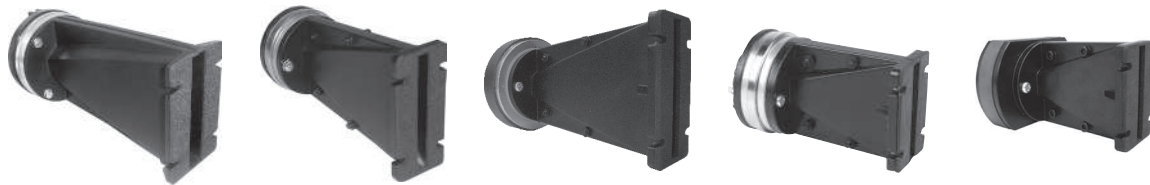
pm4

pm4

MODEL	CD11Nd	CD11Fe	CD11Fe/S	CD10Nd/N	CD10Fe/N	CD1Nd	CD1Fe	CD1/S
THROAT DIAMETER (inches)	1	1	1	1	1	1	1	1
POWER (WAES)	70	70	70	70	70	20	20	30
SENSITIVITY (dB 2.83v)	111	109	109	111	109	110	109	106
COIL DIAMETER (inches)	1,75	1,75	1,75	1,75	1,75	1	1	1
DOVE MATERIAL	PM4	PM4	PM4	PM4	PM4	Polyamide	Polyamide	PM4
XOVER (12dB/oct)	>1,5kHz	>1,5kHz	>1,5kHz	>1,2kHz	>1,2kHz	> 2 kHz	> 2 kHz	>2,5 kHz
FREQUENCY RANGE (Hz)	700-19000	700-19000	700-19000	700-19000	700-19000	1000-20000	1000-20000	2000-20000
MAGNET	Nd	Ferr	Ferr	Nd	Ferr	Nd	Ferr	Ferr
WEIGHT (Kg)	1,3	1,8	1,8	1,2	1,3	0,4	0,8	0,6

MOTORES CON GUÍA DE ONDAS

COMPRESSION DRIVERS WITH WAVES GUIDE

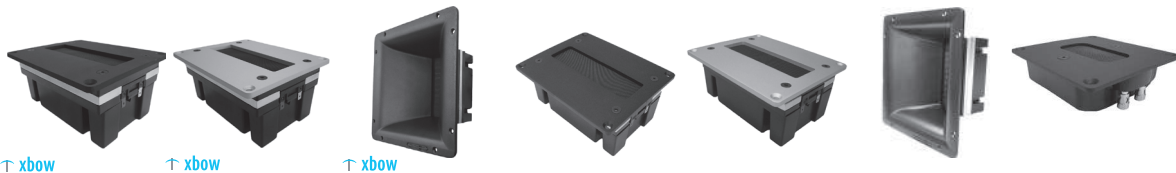


MODEL	WL5	WL4	WL4Fe/N	WL3	WL3Fe
DIAMETER (inches)	1,4	0,8	0,8	0,8	0,8
POWER (WAES)	50	40	70	40	70
SENSITIVITY (dB 2.83v)	108	105	104	105	102
COIL DIAMETER	2,87	1,75	1,75	1,75	1,75
XOVER (12dB/oct)	>800	>1500	>1200	>1500	1800
FREQUENCY RANGE (Hz)	600-20000	700-20000	700-20000	700-20000	1000-18000
MAGNET	Nd	Nd	Ferr	Nd	Ferr
WEIGHT (Kg)	2,62	1,1	1,81	1	1,8

TWEETERS

DIAPHRAGMA PLEGADO

PLEATED DIAGRAM TWEETERS



MODEL	TPL200B	TPL200S	TPL200H	TPL150B	TPL150S	TPL150/H	TPL75
POWER (WAES)	120	120	120	80	80	80	40
SENSITIVITY (dB 2.83v)	101	101	104	99	99	102	92
XOVER (12dB/oct)	>1kHz	>1kHz	>1kHz	>1kHz	>1kHz	>1kHz	1200
DIAPHRAGM MATERIAL	Kapton	Kapton	Kapton	Kapton	Kapton	Kapton	
FREQUENCY RANGE (Hz)	1000-23000	1000-23000	1000-23000	1000-23000	1000-23000	700-23000	1000-23000
MAGNET	Nd	Nd	Nd	Nd	Nd	Nd	Nd
WEIGHT (Kg)	2,75	2,75	3,55	2,08	2,08	2,9	0,7

TWEETERS DE COMPRESIÓN

COMPRESSION TWEETERS



MODEL	CP22	CP21/F	CP12/N	CP16	CP09
DISPERSION HxV	40° conical	140x40°	40° conical	40° conical	90x60°
POWER (WAES)	25	25	15	15	15
SENSITIVITY (dB 2.83v)	107	105	107	105	104
COIL DIAMETER	1,5	1,5	1	1	1
XOVER(12dB/oct)	>5kHz	>5kHz	>6kHz	>6kHz	>6kHz
FREQUENCY RANGE (Hz)	5000-20000	3500-20000	3000-20000	3000-20000	2000-20000
MAGNET	Ferr	Ferr	Ferr	Ferr	Ferr
WEIGHT (Kg)	1,6	1,7	0,75	0,75	0,60

TWEETERS DE CÚPULA

DOME TWEETERS



MODEL	T2030
DISPERSION	60°
POWER (WAES)	15 RMS
SENSITIVITY(dB 2.83v)	95
COIL DIAMETER (inches)	1
XOVER (12dB/oct)	>2kHz
FREQUENCY RANGE (Hz)	1500-20000
MAGNET	Ferr
WEIGHT (Kg)	0,65

AMPLIA GAMA

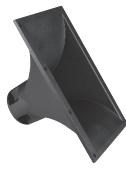
FULL RANGE



MODEL	12GA50	4FR40	3FR30
DIAMETER (inches)	12	4	3
POWER (WAES)	250	40	30
SENSITIVITY (dB 2.83v)	102	87	91
FREQUENCY RANGE (Hz)	100-18000	100-20000	160-20000
MAGNET	Ferr	Ferr	Ferr
WEIGHT (Kg)	3,55	0,55	0,57

BOCINAS

HORNS



MODEL	TD460/N	TD385	TD365
THROAT DIAMETER (inches)	2	1,4	1,4
DISPERSION HxV	60X40°	80X50°	60X50°
MATERIAL	Rigid Polyurethane Foam	Aluminum	Aluminum
CUTOFF FREQ. (Hz)	800	800	800
WEIGHT (Kg)	2	1,2	1,2



MODEL	TDWL4	TD194	TD164	TD8060
THROAT DIAMETER (inches)	0,47 x 8,19	1	1	1
DISP HxV	90 x 20°	90 x 40°	60 x 40°	80x60°
MATERIAL	Aluminum	Aluminum	Aluminum	Polycarbonate
CUTOFF FREQ. (Hz)	800	1200	1200	1,5 kHz
WEIGHT (Kg)	1,5	1	1	0,130 kg

FILTROS PASIVOS

PASSIVE FILTERS

MODEL	FD350	3V HIFI	FD250	FD2XA	FD2CX
TYPE	3 WAY	3 WAY	2 WAY	2 WAY	2 WAY
POWER (W RMS)	600	300	600	600	500
XOVER/CUT OFF FREQ.	2 / 7 kHz	800 / 5000 Hz	2 kHz	1.8 kHz	2,6 kHz
ATTENUATION SLOPE (LF/HF)	12 dB/Oct	12-12-6 dB/Oct	12 dB/Oct	12 dB/Oct	24 dB/Oct
EQUALIZATION	-3 dB @ 3,5 kHz	0	-3 dB @ 3,5 kHz	0	0
HF ATTENUATION	0, -6 dB (MF & HF)	0	0, -3, -6, -7.5 dB	0, -1.5 dB	0

MODEL	FD2CXFe	FD212	2V HIFI	F100	F130
TYPE	2 WAY	2 WAY	2 WAY	HIGH PASS	HIGH PASS
POWER (W RMS)	400	600	300	300	300
XOVER/CUT OFF FREQ.	3,8 kHz	1.2 kHz	3 kHz	6.3 kHz	3 kHz
ATTENUATION SLOPE (LF/HF)	12 dB/Oct	12 dB/Oct	6-12 dB/Oct	18 dB/Oct	18 dB/Oct
EQUALIZATION	0	-3 dB @ 3,5 kHz	0	0	0
HF ATTENUATION	0	0, -3, -6, -7.5 dB	0	0, -3 dB	0, -3 dB

ACCESORIOS

ACCESSORIES



MODEL	PIN0812	PIN0816	PIN1020	PIN1230
	PIN Ø8 x 12 mm	PIN Ø8 x 16 mm / with safety wire	PIN Ø10 x 20 mm / with safety wire	PIN Ø12 x 30 mm / with safety wire



MODEL	AM1	AM21	VM30	RE8/N
	1" screw adapter	2">1" adapter	5" back cover	8" PA grill

* Los datos técnicos pueden variar sin previo aviso.

* Technical data may change without notice

WWW.BEYMA.COM

TECHNOLOGIES/ TECNOLOGÍAS

⌘ helicex

Proporciona una mayor capacidad de manejo de potencia, menores pérdidas por compresión de potencia y un comportamiento más estable y lineal del conjunto móvil en grandes excursiones.

Provides higher power handling capacity, reduced power compression losses and more stable and linear behavior of the moving assembly in long excursions

◆ maltcross

Permite que el altavoz maneje potencias más elevadas con un diámetro de bobina dado, por lo que podemos pensar en diseños con bobinas de menor diámetro y por tanto estructuras de motor más pequeñas, reduciendo el peso pero aumentando la sensibilidad y manteniendo un manejo de potencia adecuado para una aplicación objetivo dada.

Allows the woofer to handle higher rates of power with a given coil diameter, so we can think in smaller coil designs with smaller motor structure, reducing the weight but increasing the sensitivity and also keeping an adequate power handling figure for a target application.

○ pm4

Se trata de un polímero de alta tecnología nunca utilizado en el campo del audio antes. Ofrece una unión más fuerte entre la cúpula y el soporte de la bobina, y por tanto un mejor comportamiento en el manejo de alta potencia y largos períodos de trabajo. En el ámbito subjetivo, ofrece un sonido más natural cuando se compara con otros poliésteres.

This is a new high tech polymer never used in audio before. Delivers a stronger joint between the dome and the former of the voice coil and so a better behavior with high power handling and long periods of working. In the subjective field, it brings a more natural sound when comparing it with other polyesters.

↑ xbow

El aumento de temperatura en un diafragma plegado fuerza cada pliegue, lo que limita la potencia eléctrica que puede manejar. El objetivo de la Tecnología Xbow es abrir tanto como sea posible la restricción en el diafragma, permitiendo tasas de temperatura más alta y aumentar así el límite de la potencia que puede manejar.

The increase of temperature in a pleated diaphragm strains every fold, limiting the electrical power it can handle. The target of Xbow Technology is to open as much as possible the constraint in the diaphragm, allowing it to manage higher temperature rates and so increasing the limit of the power it can handle.